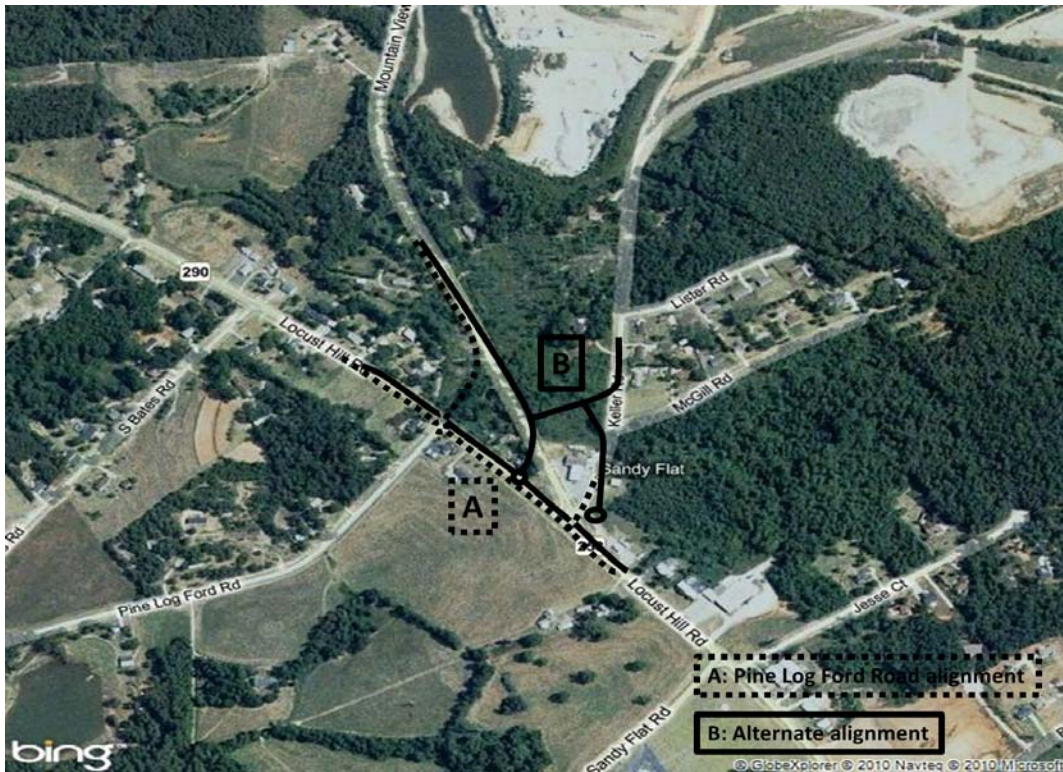


SC 290 at SC 253 INTERSECTION PROJECT
PUBLIC INFORMATION MEETING
October 11, 2011, 5:00 – 7:00 PM

Welcome

The South Carolina Department of Transportation (SCDOT) and the Greenville-Pickens Area Transportation Study (GPATS) Policy Committee and staff welcome you to this public information meeting concerning proposed improvements to the intersection of SC 290 (Locust Hill Road) at SC 253 (Mountain View Road) and Keller Road (S-140). The purpose of this meeting is to provide an opportunity to review and discuss individually with representatives of SCDOT proposed improvements to the intersection. Another purpose of the meeting is to gather information from the public or any interested organization on historic or cultural resources in the area. Please review the displays and ask any questions you may have. If you desire to make a written comment, please complete a comment sheet and deposit in the box located in the meeting room or mail (or email) your comments by October 25, 2011, to the address shown at the bottom of the comment sheet. The displays, handout, and comment form are available online at www.scdot.org by clicking the Public Hearings link. Your comments will aid us in the selection of a design that best meets the project purpose and need as well as the desires of the community. Thank you for your participation.



Project Information

The purpose of the project is to improve the safety and operation of the intersection by correcting the severely skewed intersection with a signalized “T” intersection, providing turning lanes and removing Keller Road from the SC 290/253 intersection. Two options are

displayed for your review and comment. Each option proposes the relocation of SC 253 with turning lanes and traffic signals at the new SC 290/253 intersection, as well as improvements to local roads within the project area. Please review both designs, ask any questions you may have, and submit your comments regarding the designs. SCDOT will use your comments to help select a preferred design.

Schedule and Budget

Right of way acquisitions are scheduled for 2012 and construction for 2013/2014. Both design options are estimated to cost approximately two million dollars.

Traffic & Accidents

The current traffic volume on SC 290 averages about 15,000-16,000 vehicles per day (VPD) while SC 253 averages about 5,000-6,000 vehicles per day (VPD). Assuming a 1.5% average growth rate over the next 20 years, traffic volumes for SC 290 are anticipated to be about 22,000 VPD in 2030 while SC 253 is anticipated to be about 8,000 VPD in 2030. For the three year period 2007-2009, a total of 26 crashes were reported including no fatality crashes, 6 injury crashes and 20 property damage only crashes. Most accidents were run off the road or angle collisions.

Thank You

Thank you for your participation. Please share this information with any interested persons unable to attend today. Please contact Tommy Elrod at ElrodJT@scdot.org or Jonathan Chasteen at ChasteenJR@scdot.org or by telephone at 864-241-1010 in Greenville with any questions you may have. Thanks again for your input.